



### General Specifications

Length Overall	64.5' (19.6)
Length Waterline	63.5' (19.3)
Beam	24.5' (7.45.)
Draft	4,2" (1.25M)
Displacement	26,000 KG est. light ship
Hulls & Deck	PVC and <a href="#">Corecell</a> Vinylester Vacuum GRP Resin System, (Epoxy resin system option)
Paint system	<a href="#">Alexseal</a> polyurethane
Quality Standards	CE, Class A offshore. ABS
Hull Color	Owners choice topsides, decks and superstructure Foredecks
Foredecks	<a href="#">Ferrari</a> Nets
Cockpit	Extended Aft Cockpit and Fishing Deck
Flybridge Aft Bulkhead	Fixed with side windows and door
Transom Walkway	900mm Wide With hand rails

### Internal Layout

Main Deck Level	Forward Master cabin amidships Galley, aft dining, extended cockpit aft
Number Cabins	Three to five Cabin, bridge deck master cabin, two forward on lower level Two aft
Bathrooms	3
Total Berths	5
Galley Location	Saloon amidships optional location to owners requirements

### Galley & Appliances

Cooktop	Siemens ET675MG11E 60cm 4-Zone Radiant Hob
Oven	Siemens 65 litres Built-in Electric Oven (HB23AB520W)
Rangehood	Slimline D436E air extractor, switches and lights with carbon filter
Sink	1.5 Stainless steel bowl
Fridge/Freezer	Samsung 700 Litre Double Door + Icemaker
Microwave	Ariston combi convection model
Dishwasher	Siemens Slimline style
Pantry	Port lower hull
Overhead Cupboards	Fitted forward bulkhead
Splash back	Colored glass to forward bulkhead and starboard side above sink
Cooking Tower	Incorporating microwave & storage drawers
Bench Tops	Acrylic color to owners requirements

### Forward Cabins x 2

Layout	To suit owner's requirements
Beds	Queen size island beds with storage under.
Bedhead	Fabric as specified
Ensuite	Shower, toilet, vanity cabinet & mirror
Cupboards	Wardrobe and cabinets
Hatches	Two Lewmar hatches with ocean air hatch screens

**Master cabin**

Bed	Queen or optional King size Island bed
Bed head	Vinyl Padded
Cupboards	Wardrobe and drawers under bed
Hatches	Two Maxwell hatches with ocean air hatch screens

**Starboard Aft Cabin**

Bed	Queen size
Bed head	Vinyl padded
Cupboard	Wardrobe and drawers
Hatches	Two Maxwell hatches with ocean air hatch screens
Stb aft cabin Ensuite	Separate shower head and sink

**Port Aft Cabin**

Bed	Queen size
Bed head	Vinyl padded
Cupboard	Wardrobe and drawers
Hatches	Two Lewmar hatches with ocean air hatch screens
Port aft cabin Ensuite	Separate shower head and sink

**Bathrooms and En'suites**

Extractor Fan	All bathrooms
Shower	Hot and cold
Towel Rails	All bathrooms
Soap Holders	All bathrooms
Feature Walls	In showers with timber grating
Tap wear	Jomoo Brand or similar
Heads	"Dometic " luxury silent flush
Shower screens	Separate shower screens except forward heads

**Flybridge**

Arrangement	Owners optional arrangement, Helm station. Sink, Waeco CR 110 Fridge, seating, dinette and cabinets
Helm Seating	Twin Springfield helm chairs.
Flybridge seating	<a href="#">Sunbrella fabric.</a>
Flooring	Flexi teak
Hatches	Two Lewmar hatches with ocean air hatch screens

**Finishes & Floor Coverings**

Internal Timber	Owners Choice
Internal Timber Finish	Satin
Internal Flooring	<a href="#">Amtico</a> Flooring
Bathroom Flooring	Non skid surfaces
Flybridge Flooring	
Upholstery	<a href="#">Ultra-fabric</a> interior , Sunbrella external
Internal Linings	Marine white Vinyl
Deck heads (Ceilings)	Marine white Vinyl
Galley Bench tops	Acrylic <a href="#">Corian</a> to owners requirements
Bathrooms	White Gelcoat with timber trims

Bathroom Bench tops	Acrylic color to owners requirements
Cupboards	Veneers high gloss with laminate liners
Drawers	Two pack timber veneer with laminate liners
Furniture Molding's	Two pack timber veneer with laminate liners
Doors	Two pack timber veneer with laminate liners
Dining Table	High gloss timber for 8 persons
Settee	<a href="#">Ultra-fabric</a>
Pelmets	Marine white Vinyl
Cockpit Flooring	Flexi teak
Transom Steps and swim deck	Flexi teak

---

### Entertainment

Saloon	42" Samsung smart TV. Fusion sound system. (Bose lifestyle 25 option)
All cabins	Fusion TV 20" Option
Flybridge	1 x Fusion 700 system in Flybridge with 4 Zones including aft deck, fore deck and saloon 12 speakers

---

### Engine room

No. Engines	2
Make	Cummins (Volvo IPS option)
Model	<a href="#">QSB 6.7L Electronic Diesels</a>
Horsepower	2 X 480 HP
Controls	Electronic with Joystick
Drives	<a href="#">Zeus Pod Drives</a>
Engine Ventilation	Passive flow extraction in engine rooms
Soundproofing	Engine rooms lined with marine standard insulation (Sound down)
Fuel/Water Gauges	BEP
Windscreen Wipers	1 x 28" wiper arm to Flybridge windscreen
<b>Performance</b> (estimated)	
Maximum Speed	23 - 25 Knots approx.
Cruising Speed	12 - 18 Knots approx.
Range	1,200 NM estimated at max fuel, speed 10knts

### Fuel Economy (estimated)

24 Knots	TBA from Cummins
20 Knots	TBA
16 Knots	TBA
10 Knots	45l/h

---

### Fuel Capacity

No. Tanks	4
Capacity	Total 7000 Litres 4 x 1700L with fuel transfer
Construction	Integral GRP

### Water Capacity

No. Water Tanks	2
Total Capacity	2400 Litres 2x 1200 Litres
Construction	Integral GRP

---

### Instruments & Navigation

AIS Receiver	<a href="#">Simrad</a>
Auto Pilot	<a href="#">Simrad</a> AP24 System Integrated with Zeus system
Charts	Navionics Platinum

---

Compass	105 mm Silva
GPS	Simrad GS15
Plotter	Simrad NSS12 touch screen
Plotter 2	Simrad NSE12 Multifunction Display with TV
Radar	Simrad DX64S-1 24" Radome 4 kW
Sounder/Fish Finder	Simrad Broadband Sounder Module 600W transducer
VHF Radio	Simrad RS25 VHF system

---

### Electrical

DC System	24v Standard DC system <a href="#">BEP switch panels</a>
AC System	110 VAC System <a href="#">BEP switch panels</a>
Batteries	Engine start – 2 x 130 amp <a href="#">Mastervolt</a> AGM House – <a href="#">Mastervolt 3 x 24v 180amp lithium ion batteries</a> Genset Mastervolt 1 x 70 amp AGM
Genset Make	<a href="#">Panda</a> 15000i quiet range mounted starboard engine room
Inverter/Charger	Mastervolt <a href="#">Mass Combi</a> 24/3500/100 , 220V/60Hz
Air Conditioning	108,000 BTU Marine air (Dometic) Saloon 48,000 BTU Condenser and air handler split system Flybridge 36,000 BTU Condenser and air handler split system Master Cabin 12,000 BTU Marine Air Vector Turbo Forward cabins 8,000 BTU Marine Air Vector Turbo
Lighting	60 <a href="#">Hella marine - Hella Marine</a> LED lights LED courtesy lights fitted to all stairs & companionways LED down lights all areas of passenger use LED navigation and anchor lights 8 x deck lights 6 x reading lights over berths 20 x light switches Vimar Brand white or black 4 x floodlights aft deck and foredeck & forward topsides 12 x 240 volt power points Vimar Brand white or black
Fans	1 x 24V circulating fan each cabin
Shore Power	2 x 32 AMP power inlets, isolators, RCDs 1 x Marineco shore power leads
Solar Power	0.5 KW panels with 80 amp solar Mastervolt controller
Underwater Lights	6
Wiring Specification	AS 3000, Vertex Brand marine grade tinned wire

---

### Plumbing

Plumbing system	“ <a href="#">Whale</a> Quick connect” plumbing system
Fresh water pumps	3 x Whale pressure pumps
Hot Water	2 x 40 liter electric systems
Toilets	3 x <a href="#">Tecma</a> Electric silent flush
Holding Tank	2 x 200 litre tanks with manual shut off
Bilge Pumps	8 pumps (4 each hull) 4 x electric auto/manual with float switches & non return valves and 2 x manual double action pumps
Desalinator	<a href="#">Stella</a> 140 LPH with Auto flush
Flybridge Sink	Stainless Steel
Cockpit Sink	Stainless Steel
Transom Shower	Hot & Cold Port side Whale
Windscreen Washers	To Flybridge windscreen

---

**Laundry**

Washing Machine	Siemens washer dryer Combo
Storage Cupboard	Beside washing machine

**Deck Equipment**

Anchor Winch	<a href="#">Muir</a> 3500W horizontal mounted in chain locker with chain counter
Winch Controls	Helm remote plus deck mounted foot switches
Anchor 1	60 KG Plough Stainless steel
Anchor 2	60 KG Plough Galvanised with 120 metres 18mm Silver anchor line
Anchor Chain	100 Metres ½" grade L chain
Anchor Bridle	18mm silver rope x 10 metres with Chain claw,
Anchor Wash	Whale deck wash
Cockpit Table	Timber veneer 2 x 75mm stainless steel legs fixed
Cockpit Icebox	Top loading fitted to stbd aft box
Deck Wash	Freshwater 19 litres/minute to foredeck and port aft topsides
Deck Shower	Hot & cold stbd topsides aft
Dolphin Seats	2 x composite seats located at each bow
Mooring Ropes	4 x black braided
Fenders	4 x 200mm diameter
Fender Holders	4 x stainless steel fitted to safety rails
Grab Rails	2 x fitted to port & starboard cockpit entrances
Keels	Beaching and docking keels x 2 sacrificially mounted each hull
Mooring Cleats	8 x 300mm each hull 1 x 300mm on catwalk 3 x pop-up cleats each stern swim platform
Bow Lockers	1 each bow accessed from deck with shelving
Anchor Locker	Large storage space with spare lockers either side for rope and tackle
BBQ Locker	Located aft portside, gas bottle stowage, plumbed gas line to outer transom connection for barbecue
Rod Locker	Portside space behind main fridge
Tackle Cupboard	Lockable, located stbd side aft galley area
Towing Strongpoints	To both boarding platforms
Tackle Lockers	x 2
Transom Swim Ladder	Stainless steel mounted on port swim deck
Safety Rails	32mm stainless top rail 4mm stainless intermediate wires
Spa	Not required
Spa Cover	"Sunbrella" covered 75mm foam cushion foredeck pad
Non Skid Deck Tread	Incorporated into deck molding
Transom Fishing deck	900mm as per design documents with safety rail

**Hatches, Windows & Doors**

Cabin Doors	Timber/vinyl paneling
Saloon Entrance Doors	Anodized aluminum hinged door (Stainless steel option)
Flybridge door	Anodized aluminum hinged door (Stainless steel option)
Saloon Rear Windows	Anodized aluminum sliding glass Ensuite Side Window Sliding aft section
Windscreens	12mm toughened glass
Aft Hull Windows	3 x fixed 900mm x 500mm 12mm toughened glass
Forward Hull Windows	8 x opening elliptical ports 500mm x 200mm
Foredeck Hatches	2 x 500mm x 500mm opening hatches above forward cabins "Lewmar"
Flybridge Hatches	2 x 500mm x 500mm "Lewmar"
Master Cabin Hatches	2 x 500mm x 500mm "Lewmar"
Flybridge Side Windows	6mm toughened tinted glass
Exterior Locker Doors	Composite

---

Options included in Schedule One, FOB Hong Kong

Luxury options

Panda super silent Gen set  
 Simrad Navigation upgrade  
 Ultra leather upholstery  
 Mastervolt electrical  
 Lithium Ion batteries  
 Solar charging system  
 Luxury white goods  
 Water maker

CE Certification - Class A offshore, ABS US Certification

Powerplay 65 Cummins Zeus 480hp with options

Valid until March 2016

Additional options

1 x Ray marine T400 Thermal /Low Light Camera system

KVH Satellite POA

[Czone](#) or [Empire](#) buss AC DC distribution POA

Warranty 12 months standard terms, Equipment as per OEM Warranty from delivery.

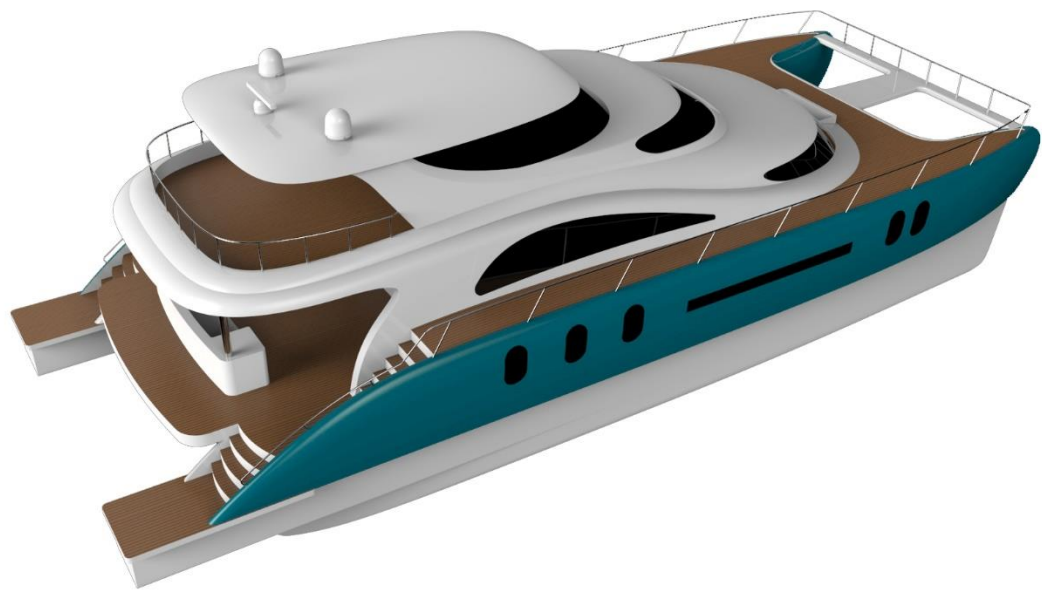
Build schedule 16 months.

Payment schedule

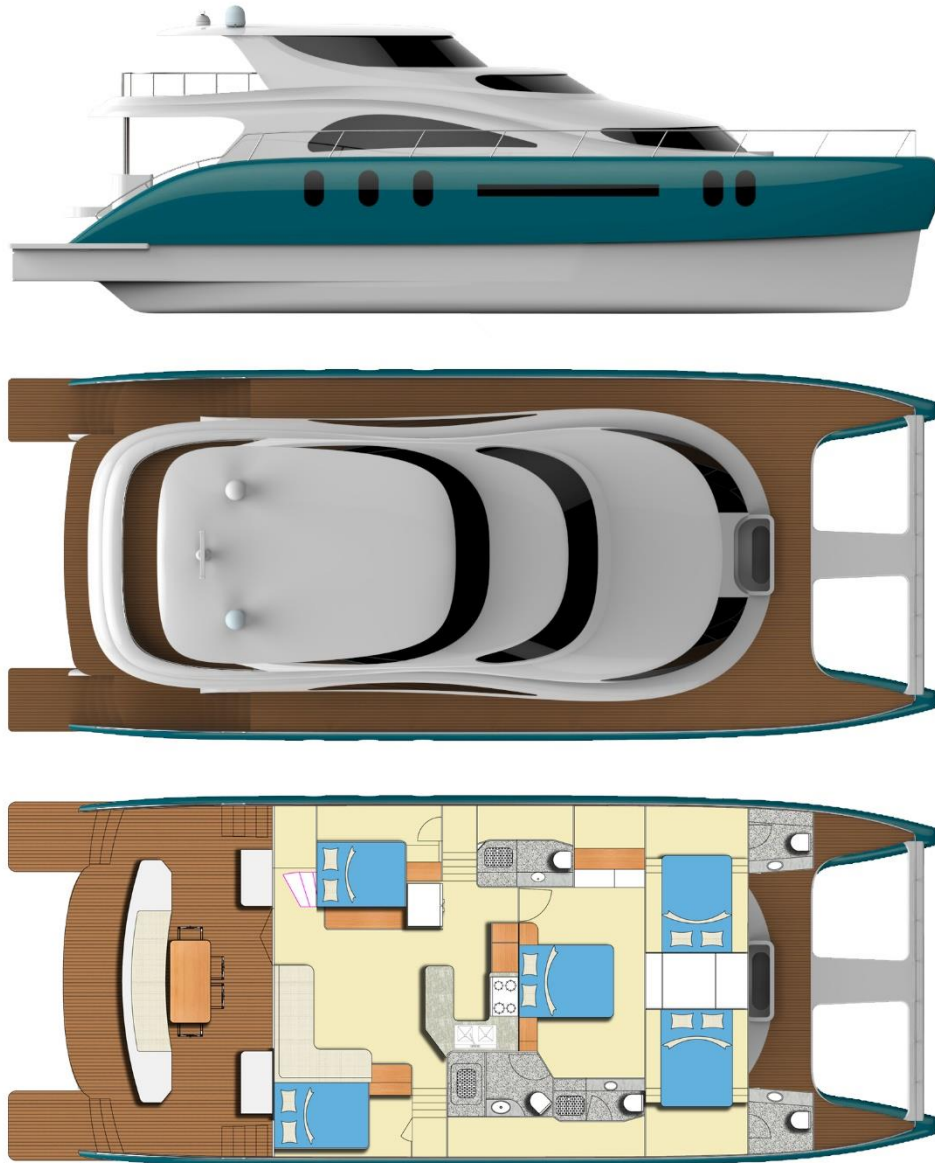
1. Upon Signing contract and booking factory build slot	2.5%
2. Completion of detailed specification, custom design documents and drawings	7.5%
3. Commencement of build	20%
4. Completion of major components hulls deck bulkheads	20%
5. Assembly of components and order engines	20%
6. Completion of interior and exterior painting	10%
7. Completion of interior fit out	5%
8. Completion of engineering stainless steel rails deck fittings	5%
9. Completion of Launching systems test and engine trials	5%
10. Handover at owners destination Shipping Port, systems test and sea trials	3%
11. Warranty retention	2.0%



Powerplay 65 Fwd view



Powerplay 65 Aft Stb

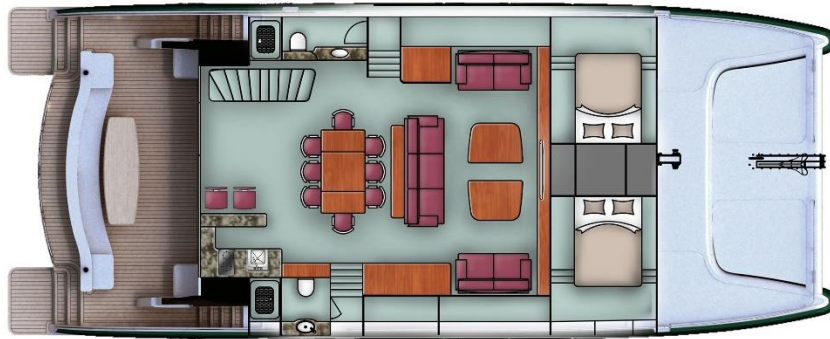
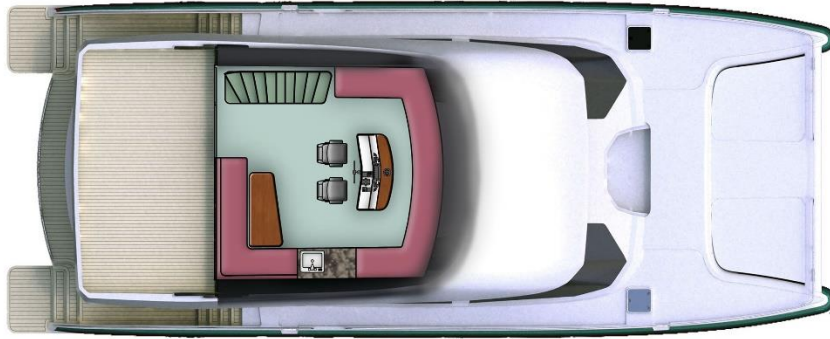
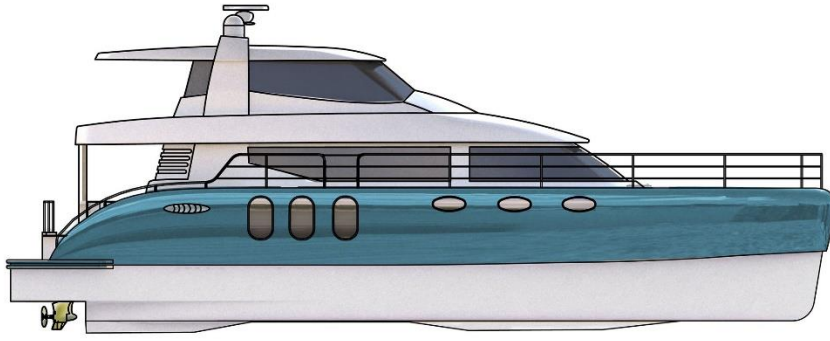


## **POWERPLAY 65**



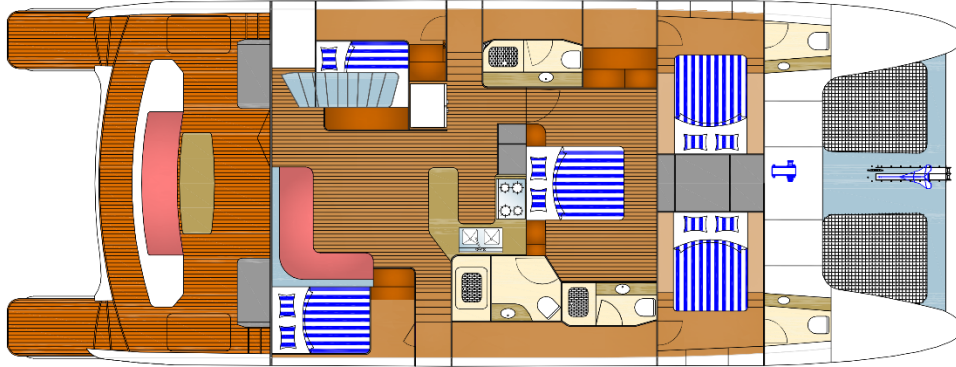
Powerplay 65 G4 General arrangement Option 5 cabin , main deck Master cabin option .



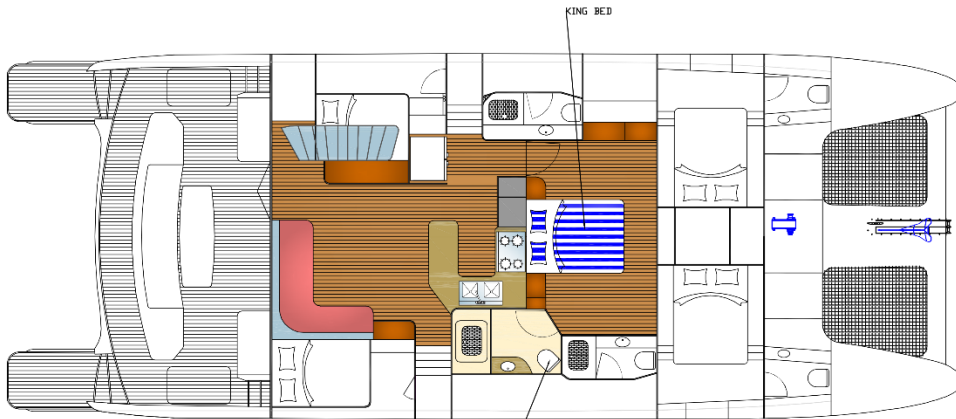


POWERPLAY 62

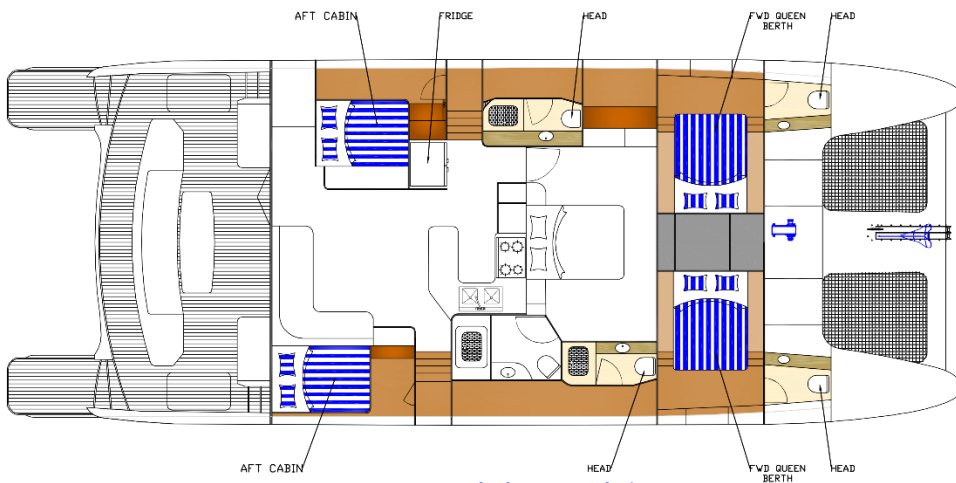




Powerplay 65 preliminary General Arrangement



Brige deck salon&master cabin



Lower deck accomodation